

MLR Climate Chambers



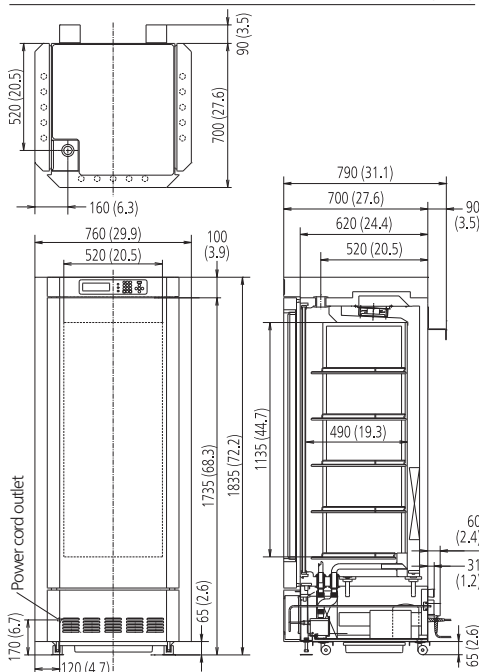
Microprocessor Control

Microprocessor P.I.D control of temperature and humidity (0°C to +50°C, 0 to 20,000lux and 55 to 90%RH resp.) create the optimum environments for various applications.

Programmable Settings

The temperature and light settings are programmable to provide the perfect cycles for vernalization. The unit allows the programming of starting day and time of operation and 10 programmes of up to 12 steps each to be memorized. Switch between the selectable clock mode or timer mode and use of the Join Mode for allowing multiple programs to be linked.

Unit: mm (inch)



Model Number	MLR-352-PE	MLR-352H-PE
External Dimensions (W × D × H)	mm	760 × 700 × 1835
Internal Dimensions (W × D × H)	mm	520 × 490 × 1135
Volume	liters	294
Net Weight	kg	226
		235
Performance		
Temperature Control Range & Fluctuation	°C	0 ~ +50 (lamp off) ±0.3 +10 ~ +50 (lamp on) ±0.3
Temperature Uniformity	°C	±1 (lamp off) ±2.5 (lamp on)
Humidity Level & Fluctuation	%RH	N/A
		60-90 / LS:0 (15-45°C) 55-85 / Lamp On (15-45°C)
Light control range		Programmable 0 ~ 20000
Control		
Temperature Sensor		Thermistor
Display		LCD
Refrigeration		
Refrigerant*		R-513A
Refrigerant weight	g	270
Refrigerant GWP		631
Total Refrigerant weight (CO ₂ equivalent)	t	0,170
Construction		
Exterior Material		Painted Steel
Interior Material		SS SUS-304
Insulation Material		PUF
Outer Door	qty	3
Outer Door Lock		N
Field Reversible Door		N/A
Inner Door	qty	1
Shelves	qty	5
Shelf Dimensions (W × D × H)	mm	
Max. Load per Shelf	kg	25
Max. Shelf Capacity	qty	100
Access Port	qty	1
Access Port Position		Ceiling
Access Port Diameter	∅ mm	40
Alarms (R = Remote Alarm, V = Visual Alarm, B = Buzzer Alarm)		
Power Failure		R
Out of Temperature Setting		B-R
High Temperature		B-R
Out of Humidity Setting		N/A
		V
Door open		V-B
Electrical and Noise Level		
Power Supply	V	230
Frequency	Hz	50
Noise Level ¹⁾	dB	29

Appearance and specifications are subject to change without notice.

¹⁾ Nominal value
* Complies with Art. 11, Annex III of F-Gas Regulation (EU) No 517/2014. Contains fluorinated greenhouse gases.

PHCbi

PHC Europe B.V.
Nijverheidsweg 120 | 4879 AZ Etten-Leur | Netherlands
T: +31 (0) 76 543 3839 | F: +31 (0) 76 541 3732
www.phchd.com/eu/biomedical