



MPR-722-PE

# MPR Pharmaceutical Refrigerators

684/1364 L\*

## Uniform storage temperature for the most demanding applications

MPR Pharmaceutical Refrigerators offer a complete solution for the most demanding requirements for storage of pharmaceuticals, medicines, vaccines, and other temperature-sensitive applications.

### Wide Temperature Range

The temperature of the MPR-722(R) and MPR-1412(R) can be set between 2°C and 23°C.

### Excellent Stability

The quiet, 120 mm diameter fan ensures an even temperature distribution throughout the cabinet, creating tight  $\pm 3^\circ\text{C}$  uniformity, whilst maintaining excellent recovery characteristics.

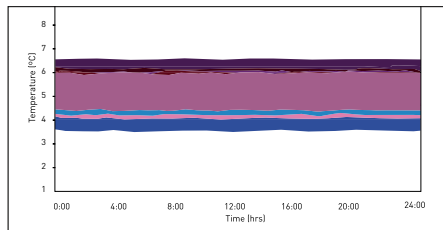
### User-friendly Design

The broad, solid frames with effective gaskets ensure excellent temperature stability, whilst double-pane glass windows offer an excellent view of the interior. Optional panels are available to block out light.



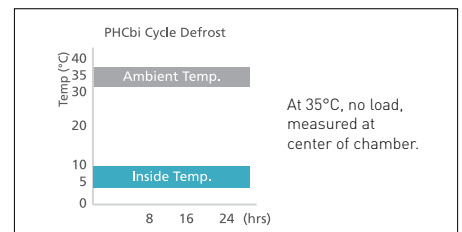
### Sensitive Sample Storage

MPR Pharmaceutical Refrigerators are ideally suited for sensitive biological and pharmaceutical storage.



### Usability with Performance

MPR refrigerators are designed specifically for laboratory applications with precise performance even under demanding conditions.



### Uniform Storage

Stable, uniform and controlled cabinet temperature, which is unaffected by outside temperature.

\* This volume is related to the MPR-722-PE and MPR-1412-PE models. See the product specifications for further details on the R models.

# MPR Pharmaceutical Refrigerators



MPR-1412R-PE

## Easy access front control panel

A large LED display of actual temperature with intuitive touch pad setting makes operation simple. It displays detailed temperatures with increment of 0.1°C.

## Drawer type shelves

The 'R' models are fitted with pull-out drawers, with dimensions of 530 mm x 550 mm and a 100 mm front profile, ideal for holding large bottles and reagent kits. They also allow convenient, space efficient storage and management of samples.

## Adjustable shelves

565 mm x 604 mm shelves are strong enough to withstand a load of up to 50 kg in the MPR-722 while shelves in the MPR-1412 can hold up to 40 kg with ease. The shelves can be arranged to accommodate tall apparatus, such as chromatography equipment. Heavier equipment can be accommodated with bespoke, made to order shelves.

Model Number	MPR-722-PE	MPR-722R-PE	MPR-1412-PE	MPR-1412R-PE
<b>Dimensions</b>				
External dimensions (W x D x H) <sup>1)</sup>	mm	770 x 830 x 1955		1440 x 830 x 1950
Internal dimensions (W x D x H)	mm	650 x 710 x 1500		1320 x 710 x 1500
Volume*	liters	684	671	1364
Net weight (approx)	kg	174	193	248
<b>Performance</b>				
Temperature setting range	°C	2 - 23		2 - 23
<b>Control</b>				
Controller		Microprocessor		Microprocessor
Display		LED		LED
Temperature sensor		Thermistor		Thermistor
<b>Refrigeration</b>				
Cooling method		Forced cool air circulation		Forced cool air circulation
Defrost method		Forced type (cycle defrost), fully automatic		
Refrigerant <sup>2)</sup>		R-513A		
Refrigerant weight	g	110		265
Refrigerant GWP		631		
Total Refrigerant weight (CO <sub>2</sub> equivalent)	t	0,069		0,167
Insulation		PUF		
<b>Construction</b>				
Exterior material		Painted Steel		Painted Steel
Interior material		Painted Steel		Painted Steel
Outer doors	qty	1 door, double pane glass, self closing		2 door, double pane glass, self closing
Outer door Lock		Y		Y
Shelves	qty	4 wire shelves, polyethylene-coated		8 wire shelves, polyethylene-coated
Drawers	qty	5 coated steel drawers		10 coated steel drawers
Max. load - per shelf/drawer	kg	50	40	50
Max. load - total	kg	200	200	320
Access port	qty	3		3
- position		Left/right/top		Left/right/top
- diameter	∅ mm	30		30
Casters	qty	4		4
Interior light		LED		LED
<b>Alarms (R = Remote Alarm, V = Visual Alarm, B = Buzzer Alarm)</b>				
Power failure		V-B-R (Optional)		V-B-R (Optional)
High temperature		V-B-R		V-B-R
Low temperature		V-B-R		V-B-R
Door open		V-B		V-B
<b>Electrical and Noise Level</b>				
Power Supply	V	230V 50Hz single phase		230V 50Hz single phase
Noise Level <sup>3)</sup>	dB [A]	48		48
<b>Options</b>				
Temperature chart recorder		MTR-0621LH-PE		MTR-0621LH-PE
- chart paper		RP-06-PW		RP-06-PW
- recorder housing		MPR-S30-PW		MPR-S30-PW
Circular type		MTR-G04C-PE		MTR-G04C-PE
- chart paper		RP-G04-PW		RP-G04-PW
- ink pen		PG-R-PW		PG-R-PW
- recorder housing		MPR-S7-PW		MPR-S7-PW
External mounting power failure alarm		MPR-48B1-PW (V-B) <sup>4)</sup>		MPR-48B1-PW (V-B) <sup>4)</sup>
Door window blanking plate		MPR-72BP-PW (1 x)		MPR-72BP-PW (2 x)

Appearance and specifications are subject to change without notice.

<sup>1)</sup> Exterior dimensions of main cabinet only, excluding handle and other external projections

<sup>2)</sup> Complies with Art. 11, Annex III of F-Gas Regulation (EU) No 517/2014. Contains fluorinated greenhouse gases.

<sup>3)</sup> Nominal value - Background noise 20dB

<sup>4)</sup> Remote alarm comes with optional power failure alarm MPR-48B1-PW

# PHC Europe

A Member of PHC Group

Eikdonk 1 | 4825 AZ Breda | Netherlands  
T: +31 (0) 76 543 3833

[www.phcd.com/eu/biomedical](http://www.phcd.com/eu/biomedical)

