

Introduction to PHC Group

PHC Holdings Corporation



PHC
GROUP

Contents

1	PHC Group Overview	P.03
---	--------------------	------

2	Our History	P.06
---	-------------	------

3	Mission / Vision / Values	P.08
---	---------------------------	------

4	Business Domains	P.12
---	------------------	------

Diabetes Management



P.13

LSI Medience P.16

Healthcare Solutions



P.18

mediford P.20



P.23

Diagnostics & Life Sciences



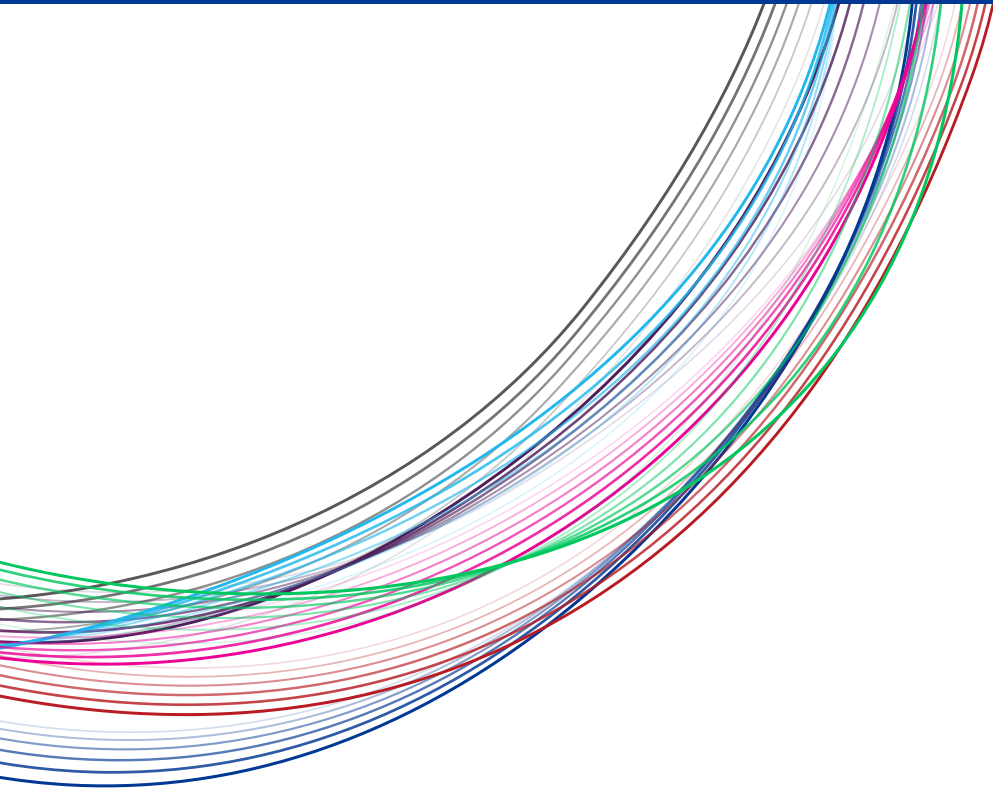
P.25



P.27

5	Sustainability	P.32
---	----------------	------

1 PHC Group Overview



Company Name	PHC Holdings Corporation
Business Address/ Head Office	15F DAI-ICHI LIFE HIBIYA FIRST 1-13-2 Yurakucho, Chiyoda-ku, Tokyo 100-8403, Japan
Founded	1969 (Founded as Matsushita Kotobuki Electronics Co., Ltd.)
Representative	President, Representative Director and CEO Kyoko Deguchi
Capital	48,623 million yen*
Listed Market	Tokyo Stock Exchange Prime Market (TSE 6523)
Main Business	<ul style="list-style-type: none">Diabetes ManagementHealthcare SolutionsDiagnostics & Life Sciences

*As of March 31, 2025

PHC Group is a global network of healthcare companies dedicated to improving health through digital and precision technology. Since our founding in Japan in 1969, we have been driving better health through solutions in diagnostics, life sciences, diabetes management, and healthcare IT.

PHC Group
Strengths



Industry-Leading
Products and Services



Manufacturing Excellence
with High Precision
and Quality



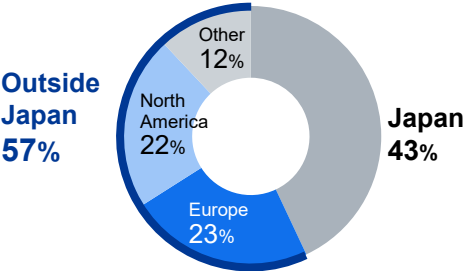
Global Reach to a Diverse
Range of Healthcare
Practitioners

Revenue*¹

361.6^{bn} yen

Operating businesses globally

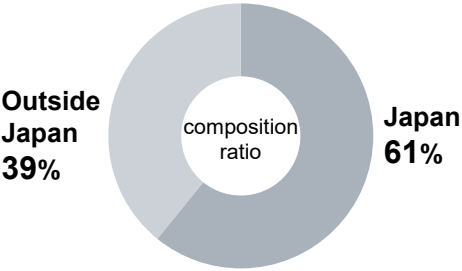
PHC Group's Revenue Geographic Mix



Employees*²

9,041

Diversified Talent



Subsidiaries*²

86

Growing a Global Network



Countries Where Our
Products are Available*²

>125

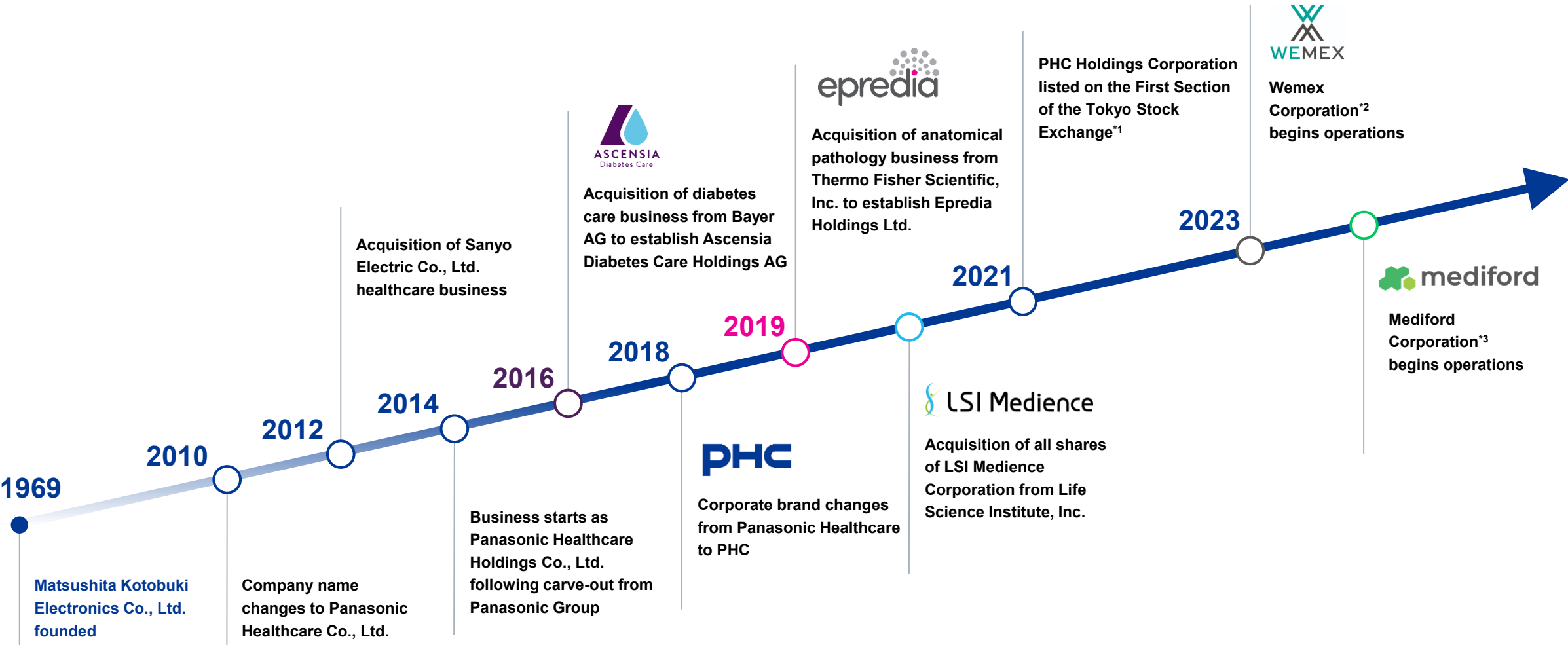
Extensive Global
Sales Performance



*1 FY2024, FX rate: 1 US\$ = 152JPY, 1 euro€=164JPY

*2 As of March 2025

2 Our History



^{*1} Listed on October 14, 2021 (TSE 6523) ^{*2} Merged the Medicom Division of PHC Corporation and PHC Medicom Corporation. ^{*3} Integrated the clinical trial business of LSI Medience Corporation to its subsidiary, and changed the company to a wholly-owned subsidiary of PHC Holdings Corporation.

3 Mission/Vision/Values

MISSION

We contribute to the health of society through our diligent efforts to create healthcare solutions that have a positive impact and improve the lives of people.

VISION

Be a leader in precision technology that powers the future of healthcare.

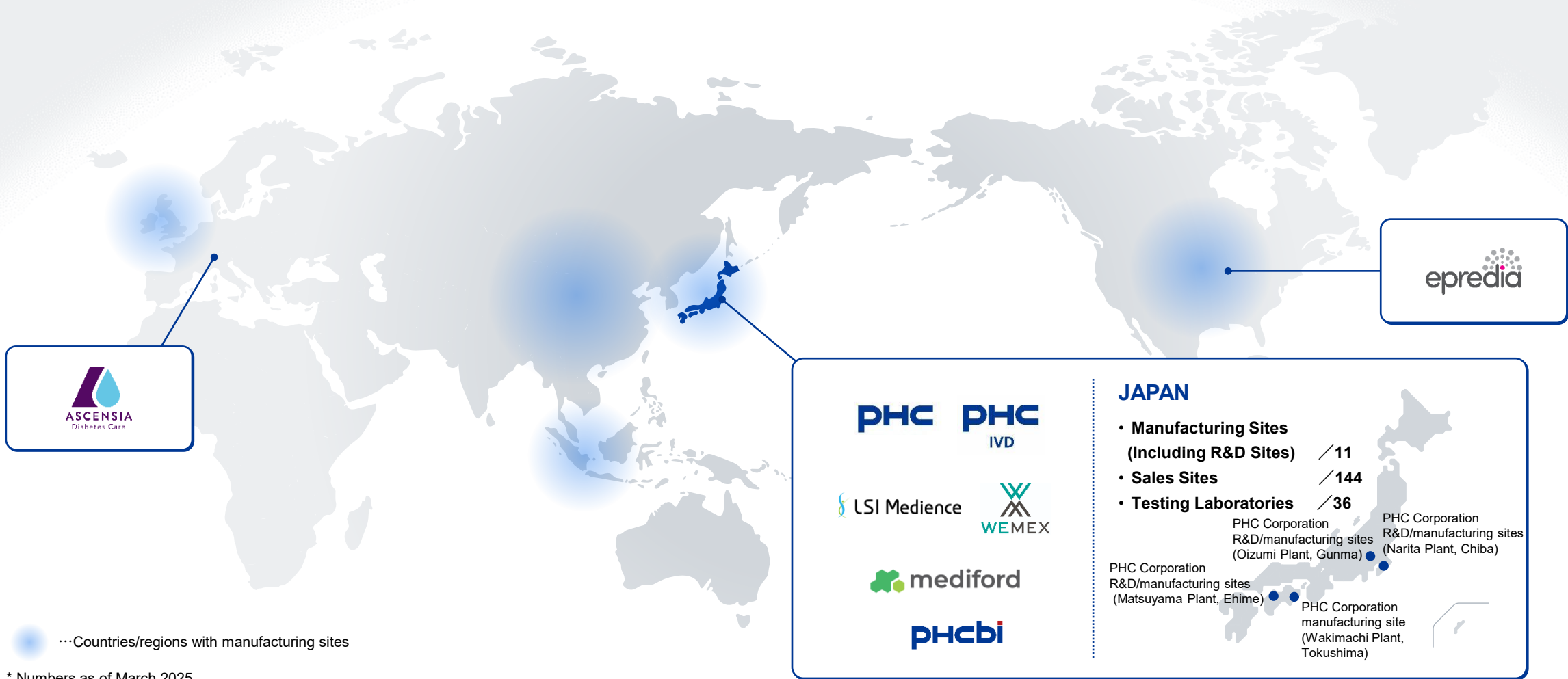
VALUES

Curiosity
Courage to Act
Respect & Collaboration
Integrity



Diabetes Management	Healthcare Solutions			Diagnostics & Life Sciences		
<ul style="list-style-type: none">• Blood Glucose Monitoring Systems• Continuous Glucose Monitoring Systems• Digital Diabetes Management Solutions	<ul style="list-style-type: none">• Clinical Testing	<ul style="list-style-type: none">• Healthcare IT Solutions	<ul style="list-style-type: none">• Supports research and development of pharmaceuticals, medical devices, and regenerative medicine	<ul style="list-style-type: none">• Anatomical Pathology Solutions for Clinical Testing and Research Laboratories	<ul style="list-style-type: none">• Research/Medical Support Equipment	<ul style="list-style-type: none">• Diagnostic Reagents and Instruments• Development and Manufacturing Contract Service• Drug Delivery• Digital Healthcare

Our global business includes **86** subsidiaries, with sales in more than **125** countries and regions.



* Numbers as of March 2025

4 Business Domains

Ascensia Diabetes Care is a global leader in diabetes technology. We have been entirely dedicated to improving the health and lives of people with diabetes for over 80 years.

Our Strengths

- 1 **Serving** people with diabetes in more than 100 countries and regions
- 2 Global sales network **to meet diverse needs of diabetes management**
- 3 **Highly innovative product portfolio** based on accuracy and patient needs
- 4 Integrated monitoring devices and digital technologies **to support more effective self-management**

Target Customers

People with Diabetes



Pharmacies



HCPs



Our blood glucose monitoring systems are highly accurate, easy-to-use, and widely accepted by people with diabetes around the world. Ascensia offers solutions to effectively manage diabetes while leveraging monitored data through the integration of digital technology.

Blood Glucose Monitoring (BGM) Systems

Easy-to-use, highly accurate blood glucose monitoring for daily use by people with diabetes



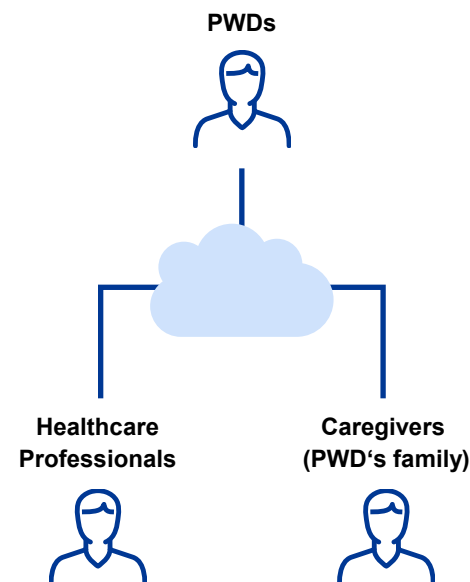
Continuous Glucose Monitoring (CGM) Systems

World's first*² long-term implantable sensor for continuous glucose monitoring



Digital Diabetes Management Solutions

Consolidated diabetes management solutions that support more effective self-management and data sharing for PWDs



History of Innovation

First Test for Measuring Glucose in Urine (1941)



First Portable Blood Glucose Meter (1969)



*1 As OEM supplier. Source: In-house analysis

*2 This is based on information provided by Senseonics Holdings, Inc., the developer and manufacturer of this product.

Manufacturing sites in Indonesia and Japan, and operations in more than 30 countries and regions.



● ...Headquarters of Group Companies ● ...Sales Sites ○ ...R&D
(As of March 2025)

Since the founding of its predecessor, Medical Science Corporation, in 1975, the business that is now LSI Medience has contributed to the prevention, early detection, and treatment of diseases through clinical testing.

Our Strengths

1

Diverse testing portfolio with more than 4,000 types of tests

2

High-quality testing with international certification*

3

Large sales network extending across Japan

Target Customers

Hospitals/Clinics

Food
Manufacturers

Some products and services may not be available in all countries

* The College of American Pathologists (CAP)

LSI Medience provides services in clinical testing through laboratory analysis, including cancer diagnostics, genetic testing, and sports doping testing.

Clinical Testing

Its Laboratory Automation System responds to advanced clinical testing needs and offers a wide variety of tests, including biochemistry, hematology, immunology, microbiology, and genetics.



Doping Tests

Support global anti-doping activities as Japan's only laboratory certified by the World Anti-Doping Agency (WADA)*. Implements sample analysis with the latest equipment and advanced analytical methodologies.



* World Anti-Doping Agency

Some products and services may not be available in all countries

Wemex is a healthcare solution provider that contributes to the digital transformation of healthcare. The business has a long history of providing cutting-edge healthcare IT for clinics and pharmacies in Japan, starting with launching Japan's first receipt computer in 1972.

Our Strengths

- 1 **Extensive medical IT knowledge and experience** accumulated over half a century
- 2 **Strong customer base** in the market segments of hospitals and pharmacies
- 3 **Accurate and prompt support services** through our nationwide business locations in Japan
- 4 **Comprehensive ICT-based solutions** that enable online collaboration between medical institutions and patients

Target Customers



Some products and services may not be available in all countries

Wemex offers a variety of solutions to drive digital transformation in healthcare in Japan. Electronic medical record and electronic medication history systems provide interfaces with tools including online eligibility verification, electronic prescriptions, as well as integrations with services provided by other companies.

Clinics/Hospitals/Remote/Pharmacies

Receipt Computers

For Clinics/Hospitals



Example **medicom-HRf core**

Automatically reads data from patients' health insurance cards for a smooth payment process.

Electronic Medical Records

For Clinics



Medicom クラウドカルテ

Example **medicom-HRf Hybrid Cloud**

Improves operational efficiency by reducing workloads in entering medical records.

Systems for Pharmacies

PharnesX-MX

Prevents errors and support efficient pharmacy management. Has built-in functions for prescription review and insurance claim validation.

Wemex 薬局経営支援

Supports back-office operations, from inventory management and order placement to business analysis as a cloud service.

EMR System for Dental Clinics^{*3}

fine-SEED

Replicates flexibility and user-friendliness of handwritten medical records. Reduces operational friction.

Receipt Screening Support System^{*3}

べてらん君 collaboration **Plus**

Efficiently streamlines medical fee billing operations by inspecting 10,000 receipts in approximately 8 minutes^{*4} with high-speed processing.

Wellness and Prevention

Health Management Solutions

Wemex 保健指導システム

Supports smooth and detailed health guidance for employees (members of health insurance societies). Helps healthier lifestyles for approximately 100,000 people every year.

Outsourcing Services for Healthcare Operations

Wemex 健診代行

Comprehensive health checkup support service reduces workloads of companies and health insurance associations.

History of Innovation (Japan)

Receipt Computer (1972)



Some products and services may not be available in all countries

^{*1} Source: Fuji Keizai Co., Ltd., "2023 Current Status and Future Outlook of the Medical and Healthcare DX-Related Market," based on 2022 company share (value-based) for Electronic Medical Records Systems for Clinics (PHC actual).

^{*2} Source: Fuji Keizai Co., Ltd., "2022 Current Status and Future Outlook of the Medical Collaboration and Medical Platform-Related Market," based on 2020 company share (volume basis) for Medical-receipt Computers (PHC actual).

^{*3} Provided by subsidiary, Wemex Healthcare Systems Corporation ^{*4} As measured under the default settings in the operating environment of OS Windows 10 (64 bit) / CPU: Intel i7-k7700 3.6GHz / Memory: 8.00GB. Processing* refers to the procedure from the check execution to the check result display and does not include the time required for file loading and operation.

Mediford was established in 2023, integrating the clinical trial business previously under LSI Medience Corporation and the non-clinical testing business formerly under LSIM Safety Science Institute Corporation.

Our Strengths

- 1 **Unique drug development technologies** (PDX · PDC, IMS)^{*1} for personalized medicine^{*2}
- 2 **Development support services for products, including regenerative medicine**
- 3 **Analysis technologies** (PBMC separation^{*3}, nucleic acid drugs, and biomarkers) compatible with new treatment options
- 4 **Consulting from non-clinical trial strategy development to implementation**

Target Customers

Pharmaceutical Companies/
Drug Discovery Ventures

Business Enterprises (chemicals,
agrochemicals, foods, cosmetics, etc.)



Universities

Public
Institutions



Some products and services may not be available in all countries

^{*1} Treatment tailored to each patient's constitution and type of disease.

^{*2} PDX/PDC: Tissue fragments of human cancer tissue transplanted into immunocompromised mice, IMS: Imaging mass spectrometry of the sample

^{*3} PBMC: Human peripheral blood mononuclear cells

Mediford offers services that support a wide range of research and development, from the exploratory phase of drug development to clinical testing, using reliable testing and analytical capabilities accumulated through extensive experience in contract research.

Non-clinical Testing Services

Offers a wide range of services, from studies for regulatory approval applications to exploratory studies in the early stages of research and development, as well as consulting services using GLP*-compliant facilities and cutting-edge equipment.



Bioanalysis Services

Develops analytical methods for drugs, metabolites, and biomarkers of biological samples, conducts validation of analytical methods, and measures actual samples.



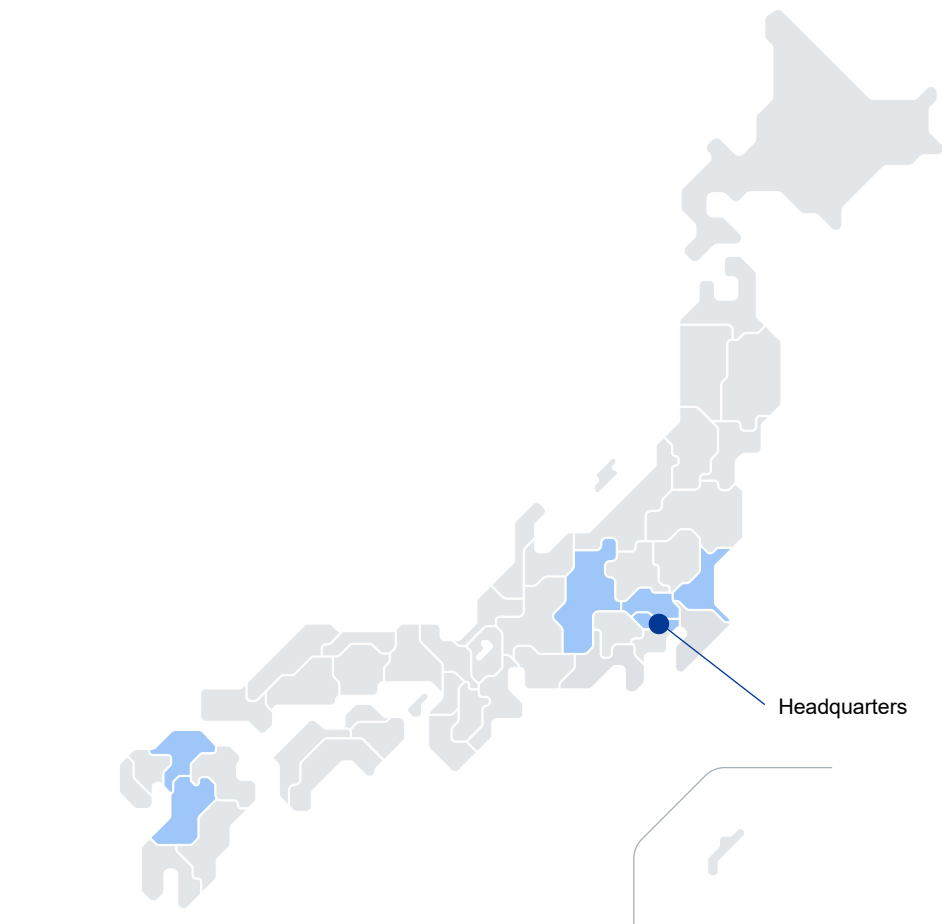
Central Laboratory Services

Supports a series of processes from specimen collection to batch testing for clinical research (clinical trials and clinical testing) conducted at medical institutions in Japan, and responds to demands for global drug development.



* GLP : Good Laboratory Practice. Standards to ensure the safety and reliability of non-clinical studies of pharmaceuticals

R&D, manufacturing, laboratory, and sales sites across Japan



...R&D or Manufacturing Sites

(As of May 2025)

	<div>LSI Medience</div> <div>Headquarters (Minato-ku, Tokyo)</div>	<div>WEMEX</div> <div>Headquarters (Shibuya-ku, Tokyo)</div>	<div>mediford</div> <div>Headquarters (Itabashi-ku, Tokyo)</div>
R&D or Manufacturing Sites	<div>• Itabashi/Tokyo</div>	<div>• Tokyo • Saitama • Nagano • Fukuoka</div>	<div>• Ibaraki • Kumamoto</div>
Sales Sites	<div>approx. 60</div>	<div>57</div>	<div>7</div>
Laboratories (Registered sanitary inspection offices)	<div>33</div>	<div>-</div>	<div>3</div>

Epredia is a global leader in anatomical pathology, working to improve patient outcomes by providing a comprehensive range of solutions supporting precision cancer diagnostics and research. Every second of every day, 48 Epredia products are used in the battle against cancer.

Our Strengths

- 1 **High-quality, comprehensive product lineup** that improves the efficiency and accuracy of pathology processes
- 2 **Trusted customer relationships and high market shares** built since 1937
- 3 **Strong sales network** established mainly in Europe, the U.S., and Asia, including Japan

Target Customers

Hospitals/Clinics



Research
Institutions/Universities



Pharmaceutical
Companies



From instruments to microscope slides and staining reagents, Epredia's diagnostic solutions help to improve workflow efficiency from specimen collection to analysis. Together they enable safer, quicker, and more accurate diagnoses of cancer.

<h3>Histology Consumables</h3> <p>Bringing much needed standardization to non-standardized patient testing environments</p> <p>Microscope Slides</p>  <p>Histology Staining Solutions</p> 	<h3>Laser Slide and Cassette Printing</h3> <p>Enhancing laboratory efficiency and sample traceability</p> 	<h3>Tissue Processors</h3> <p>The foundation for diagnostic confidence</p> 	<h3>Microtomes and Cryostats</h3> <p>Supporting a comfortable sectioning workflow</p> 	<h3>Digital Pathology</h3> <p>Enabling laboratories today while preparing for the future</p> 
---	--	---	--	---

Since the launch of its business as Sanyo Electric Co., Ltd. in 1966, the Biomedical business has supported medical practice and life science research with its industry-leading technologies and commitment to quality through manufacturing excellence.

Our Strengths

- 1 **Industry-leading high-performance and high-quality products and services** recognized by major pharmaceutical companies and official certification authorities
- 2 **Proprietary technologies and precision manufacturing capabilities** to meet diverse customer needs and achieve high-performance and usability
- 3 **Sales and service network** established in some 110 countries
- 4 **High market shares and strong customer bases** within and outside of Japan

Target Customers

Pharmaceutical/
Biotech Companies



Hospitals/Clinics



Research
Institutions/Universities



Pharmacies



Through three segments of solutions in life science, pharmacy, and food catering, we create new values in life science research and medical practice.

Ultra-Low Temperature Freezers

Contributes to reducing global environmental impact with industry-leading^{*1} energy-saving performance; high usability supports research activities



CO₂ Incubators

Superior control technology and unique anti-contamination features help to ensure an optimal cell culture environment and improve efficiency and reproducibility



Pharmaceutical Refrigerators with Freezer / Pharmaceutical Refrigerators

Contributes to reducing greenhouse gas emissions through its remarkable energy-saving performance, while preventing quality degradation of pharmaceutical products with its precise temperature control technology



IoT Lab Management Solution

Real-time cloud integration of equipment operation data. Contributes to improved quality control and enhanced facility management operations.



Live Cell Metabolic Analyzer

Without sampling, it measures cellular metabolic changes in real time and continuously with proprietary high-precision in-line sensors. Supports research in areas such as cancer and stem cells.



Cell Expansion Bioreactor System^{*3}

Automatically replaces culture medium based on in-line sensor readings that visualize metabolic changes. Continuously optimizes the cell culture environment to contribute to improving the Quality, Cost, and Delivery (QCD) of manufacturing processes.



Automatic Tablet Counting and Packaging Systems

Reduces medication errors and the workload of pharmacists



Food Catering Carts

Assists with the optimal temperature of meals for hospitalized patients, reducing workload and improving efficiency of food delivery



*1 ENERGY STAR certification

*2 In-house study

*3 Currently under development product

PHC IVD supports to the early detection and effective treatment of diseases by providing highly accurate, reliable, and high-value-added medical devices and in vitro diagnostics.

Our Strengths

- 1** Excellence in development and manufacturing technology of diagnostic reagents and instruments
- 2** Installation of fully automated facilities that ensure high-quality, precision manufacturing and optimized production (blood glucose sensor plant in Matsuyama, Ehime Prefecture)
- 3** Proposals that are tailored to OEM partners based on their VOC^{*1} research
- 4** Efficient product development through concurrent engineering and front loading^{*2}

Target Customers

Hospitals/Clinics



Medical Device
Manufacturers



Pharmaceutical
Companies



^{*1} Abbreviation for Voice of Customer. Refers to opinions and requests from customers.

^{*2} Concurrent engineering: Reducing development time by simultaneously running multiple processes. Front loading: Improving project efficiency by shifting latter processes upfront from the initial design phase.

PHC IVD contributes to real-time testing in medical practices through its highly accurate diagnostic reagents, developed from the industry's first latex technology, and its compact POCT (point of care testing) devices.

Diagnostic Reagents

Offers a wide range of in vitro diagnostic reagents that measure blood components, including blood coagulation and fibrinolysis. Contributes to rapid testing with immunochromatography reagents that detect influenza and COVID-19 viruses.



Diagnostic Instruments

Immunoassay analyzer for cardiac disease, sepsis, and gonad-related markers ensures highly sensitive and rapid measurement. Responds to needs ranging from emergency wards to large-scale central laboratories with instruments such as fully automated blood coagulation testers.



History of Innovation

Auto sample fill blood glucose sensing system for blood glucose monitoring system (1991)



Measuring equipment using latex aggregation Immunoassay method (LPIA-1) globally (1982)



We collaborate with partners to contribute to the detection and treatment of diseases such as diabetes and asthma.

Blood Glucose Self-Monitoring System

Supplied to Arkray, Inc. *1



POC System (For HbA1c/lipid/CRP testing)

Supplied to Roche Diagnostics International Ltd.



Blood Glucose Monitoring System for Hospitals/Clinics

Supplied to SANWA KAGAKU KENKYUSHO CO., LTD.



Lancing Devices/ Lancets

Supplied to SANWA KAGAKU KENKYUSHO CO., LTD.



Motorized Digital Injector

Supplied to JCR Pharmaceuticals Co., Ltd.



Motorized Digital Injector

Supplied to Pfizer Inc.



Motorized Digital Injector

Supplied to Teijin Pharma Limited



Fractional-exhaled Nitric Oxide (FeNO) Measuring Device*

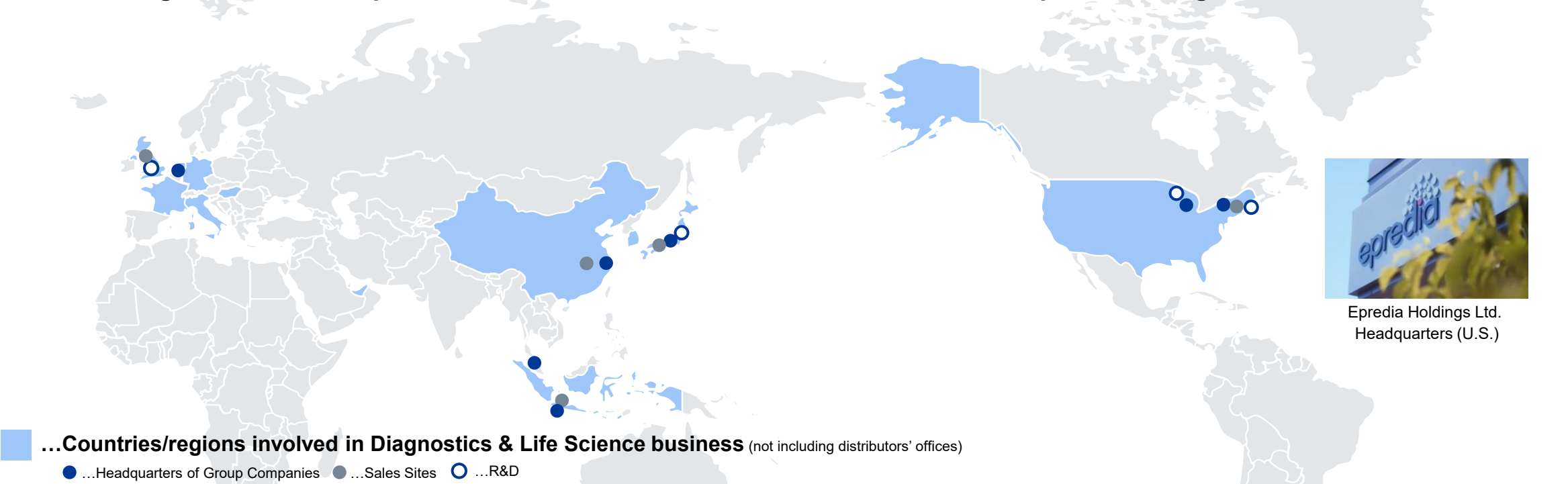
Supplied to NIOX Group PLC



*The U.S. FDA approved

*1 This product is in the diabetes management business domain and is handled by the In Vitro Diagnostic Division of PHC Corporation.

Manufacturing facilities in Europe, the U.S., and Asia. Sales offices in 14 countries for EpreDia and eight countries for PHCbi.



EpreDia Holdings Ltd.
Headquarters (U.S.)

Manufacturing Sites

- EpreDia Holdings Ltd. (U.S., UK, China)
- Fa-Tech Diagnostics Italia S.R.L. (Italy)
- Laurypath (France)
- Microm Microtech France (France)

Sales Sites 14 countries

Manufacturing Sites

- PHC Corporation (Japan)
- PT PHC Indonesia (Indonesia)

Sales Sites 8 countries

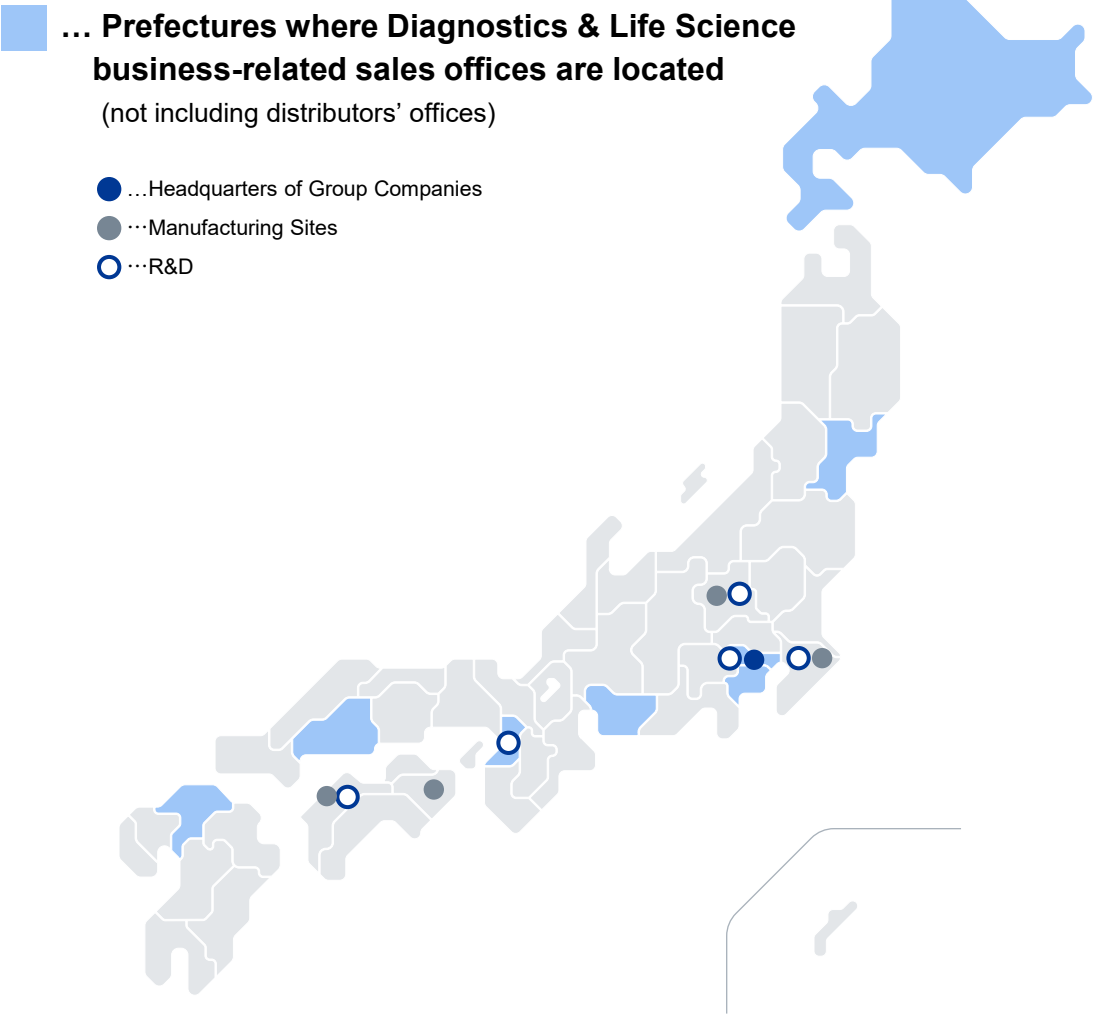
- PHC Corporation (Japan)
- PHC Corporation of North America (U.S.)
- PHC Europe B.V. (Netherlands/UK/France/UAE※)
- PHC Corporation (Shanghai) Ltd. (China)
- SciMed (Asia) Pte Ltd (Singapore)
- PT PHC Sales Indonesia (Indonesia)

※ Marketing Site

Manufacturing/Sales Sites

- PHC Corporation (Japan)
- PT PHC Indonesia (Indonesia)

(As of March 2025)



Sales Sites

- Tokyo
- Osaka
- Fukuoka



Sales Sites

- Hokkaido
- Miyagi
- Tokyo (Headquarters)
- Kanagawa
- Aichi
- Osaka
- Hiroshima
- Fukuoka

Manufacturing Sites

- Gunma (Oizumi Plant)
- Ehime (Matsuyama Plant)



Sales Sites

- Hokkaido
- Miyagi
- Tokyo (Headquarters)
- Aichi
- Osaka
- Hiroshima
- Fukuoka

Manufacturing Sites

- Chiba (Narita Plant)
- Tokushima (Wakimachi Plant)
- Ehime (Matsuyama Plant)

(As of March 2025)

5 Sustainability

Environment



We aim to become carbon neutral by 2040. This will be achieved through our materiality topics.

- Climate Change
- Preservation of Natural Resources
- Circularity

www.phchd.com/global/sustainability/environment

Social



By providing high-quality, cutting-edge products, we contribute to the development of new treatments and the quality of medical care.

- Healthcare innovation
- Product excellence
- Supply chain
- Expanded access
- People & culture

www.phchd.com/global/sustainability/social

Governance



We will ensure the trust of our stakeholders through compliance with laws, ethical conduct, early detection of risks, and appropriate responses.

- Corporate Governance
- Risk management
- Cybersecurity

www.phchd.com/global/sustainability/governance

Participation in sustainability initiatives

Near-term Science Based Targets Validated By Global Organization Science Based Targets initiative*1



*1 A corporate climate action organization that checks and validates the scientific basis of CO₂ emissions reduction targets set by companies worldwide. It acknowledges that approaches to reducing emissions are scientifically grounded and consistent with the Paris Agreement's goal of limiting global temperature rise to below 1.5°C relative to pre-industrial levels. <https://sciencebasedtargets.org/>

Disclosed our environmental information through CDP*2



*2 A non-governmental organization (NGO) managed by a UK-based charity that runs the global disclosure system for investors, companies, cities, states, and regions to manage their environmental impacts since its inception in the year 2000. www.cdp.net/en

Rating

Earned the Bronze Medal in EcoVadis' Sustainability Assessment*3



*3 Environment, Labor & Human Rights, Ethics, and Sustainable Procurement, based on thousands of external sources, such as NGOs, labor unions, international organizations, local governments, and audit institutions. EcoVadis is an independent collaborative platform that has evaluated more than 130,000 companies and organizations in 180 countries. ecovadis.com/

Selected as a constituent of the MSCI Japan Equity ESG Select Leaders Index*4
Ranked AA in the latest MSCI ESG Ratings

2024 CONSTITUENT MSCI NIHONKABU ESG SELECT LEADERS INDEX



*4 This index is comprised of companies that excel in ESG evaluation among the constituents of the parent index (MSCI Nihonkabu Equity IMI Index); 517 companies have been selected as of January 2024. www.msci.com/our-solutions/indexes/nihonkabu-esg-select-leaders-index

